

Category:In process

This category contains articles that are **under construction**.

These articles were marked by the template Under construction and their author or editor is hardly working with the article just now. Please, do not edit these articles without asking the editor. If the editor forgets the template, after **30 days** the article will be moved into category Forgotten.

If you are not sure, you can contact our editorial board. We are here to help you!

Pages in category "In process"

The following 200 pages are in this category, out of 320 total.

(previous page) (next page)

2

- 2nd law of thermodynamics

A

- Absorption
- Achilles tendon enthesopathy
- Acid-base balance (ABB)
- Active membrane transport
- Activity
- Acute complications of diabetes mellitus
- Acute coronary syndrome
- Addison's Disease
- Addison's disease
- Agrafie
- Amphetamines
- Anal and rectal atresia
- Angiography
- Angioinvasive treatment of arterial blockages and stenoses
- Anosognosis
- Apoptosis and Necrosis
- Archaea
- Arterial reconstruction
- Atomic force microscopy
- ATP-Synthasis
- Atrophy - pathology

B

- Backcross
- Bajliom
- Bakalari 2021 zkouskove otazky
- Basic procedure of artificial tissue preparation
- Bernoulli equation
- Biomechanics of blood circulation
- Biomechanics of the heart
- Biophysical aspects of extracellular matrix function
- Biophysical principle of energy conversion in mitochondria
- Biophysical principles of nerve impulse propagation
- Biophysics of eyesight disorders
- Biophysics of the auditory organ
- Biosignal artifacts
- Blockage of Large Veins
- Blood pressure

C

- Calcitonin
- Cardiogenic shock (pediatrics)
- Characteristics of biosignals
- Chronic obstructive pulmonary disease (COPD)
- Classification and structure of proteins
- Classification of mental and behavioral disorders

- Coagulation tests
- Coefficient of Inbreeding
- Coefficient of Relatedness
- Coenzyme A
- Coenzyme Q
- Collagen
- Colorectal cancer/PGS
- Comorbid mental disorders in internal , neurological and oncological diseases
- Comparison of electric and magnetic fields
- Comparison of microscopic techniques
- Comparison of microscopic techniques/application
- Comparison of microscopic techniques/resolution
- Comparison of transport
- Concentration
- Confocal microscopy
- Congenic Strain
- Congenital cataract
- Connective tissues
- Consomic Strain
- Continuity equation
- Control of ventilation
- Controlled drug delivery
- Coombs test
- Cortisol
- Cryotherapy
- Cushing's disease

D

- Deficiency of complement components
- Dental caries in childhood
- Dermoidy
- Development of human psyche
- Development of teeth
- Development of the genital ducts
- Differential amplifier
- Diffusion
- Diffraction
- Digestion
- Digitus malleus
- Dilated cardiomyopathy (pediatrics)
- Diploid
- Disorders of lipoprotein metabolism (1.LF, NT)
- DNA replication
- Doppler sonography/medical applications
- Doppler sonography/physical principle
- Doppler sonography/types and outputs
- Drinking Water

E

- Education of disabled children
- Eikenella
- Electric field
- Electrical activity of cells, tissues and organs
- Electrical biosignals/examples
- Electrocardiography
- Electrodes for diagnostics
- Electromagnetic force
- Electromagnetic spectrum
- Electron microscopy/principle
- Endostosis
- Enthalpy
- Enzyme cofactors
- Enzymes (exercise in biochemistry)
- Epilepsy
- Epileptic seizure
- Epileptogenesis
- Epiphysis (part of bone)
- Epithelia
- Etiology of mental disorders
- Evoked potentials
- Ewing's Sarcoma
- Examination methods in gastroenterology
- Exudative superficial inflammations

- Eye as an optical system

F

- Facilitated diffusion
- FACS
- Fetal Doppler sonography
- Fick's first law
- Fluophores
- Fluorescence microscopy
- Fluorescence polarization
- Fluorescence quenching
- Fluorescence spectroscopy
- Fluorescence/characterization
- Fluorescence/principle
- Food Groups in Human Nutrition
- Help:Frequently used templates
- Fundamental forces of nature
- Fundamental particles
- Fundus of stomach (specimen)
- Förster energy transfer

G

- Gamma rays characteristics
- Gamma rays in medicine
- Garden's classification
- Genetic Drift
- Genoa vara
- Genocopy
- Genome
- Goniometry

H

- Hallux rigidus
- Hallux valgus in children
- Haploid
- Haplotype
- Hapten
- Hearing examinations and disorders
- Heart whirl
- Heat transport
- Hemizygote
- Hepatic porphyrias
- Hepcidin
- Heritability
- Heterozygote
- HHV-8
- Histiocyte
- History of psychiatry
- Homozygote
- Hyperaldosteronism
- Hyperkeratosis
- Hyperostosis
- Hypertension
- Hyperthermia therapy
- Hypophysis - HE

I

- Ideal fluid
- Idiotypes and antiidiotypes
- IgE and IgD
- IgG
- Individual filament structure and function
- Influence of high temperatures on human organism
- Influence of low temperatures on human organism
- Inhibition of enzymes
- Ion channel
- Isoprenoids

K

- Kidney damage in diabetes mellitus
- Kidney Transplantation
- KIT

L

- Laminar flow
- Laser types
- Laser/Application
- Laser/Physical principle
- LF1 Pathophysiology exam questions 2020
- LF1 Zkouskove otazky z patofyziologie 2020
- LF2 pathophysiology exam questions 2020
- LF2 Zkouskove otazky z patofyziologie 2020
- LF3 Pathophysiology exam questions 2020
- LF3 Zkouskove otazky patofyziologie 2020
- Light dispersion
- Lipid bilayer
- Liposomes - properties and bursting
- Liposomes as drug carriers
- Living organism as a thermodynamic system
- Locus
- Long's method
- Loudness level
- Lung

M

- Magnesium
- Magnetic dipole
- Major types of intercellular junctions
- Matter and energy
- Mechanical ventilation
- Megacolon congenitum
- Metabolic syndrome

(previous page) (next page)

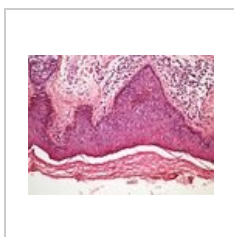
Media in category "In process"

The following 200 files are in this category, out of 250 total.

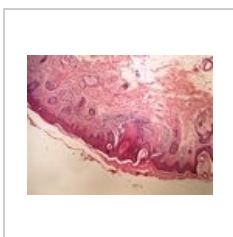
(previous page) (next page)



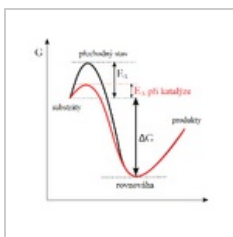
04 Tluste strevo.j...
811 × 898; 87 KB



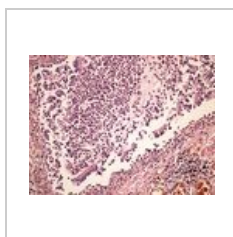
Actinic keratosis ...
2,560 × 1,920;
2.75 MB



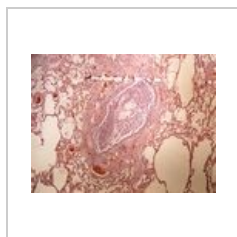
Actinic keratosis ...
2,560 × 1,920; 3.1
MB



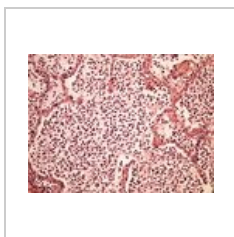
Activation energ...
642 × 609; 28 KB



Acute bronchitis ...
2,560 × 1,920;
3.08 MB



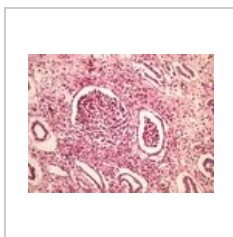
Acute bronchitis ...
2,560 × 1,920;
3.39 MB



Acute bronchopn...
2,560 × 1,920;
3.07 MB



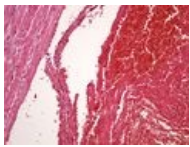
Acute bronchopn...
2,560 × 1,920;
3.61 MB



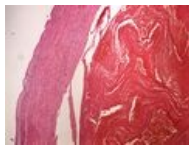
Acute pyelonefrit...
2,560 × 1,920;
3.27 MB



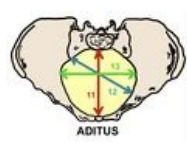
Acute pyelonefrit...
2,560 × 1,920;
3.61 MB



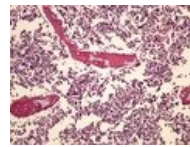
Acute thrombosis...
2,560 × 1,920;
2.59 MB



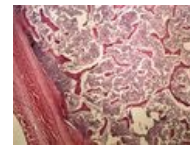
Acute thrombosis...
2,560 × 1,920;
3.04 MB



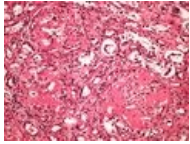
Aditus pelvis.jpeg
791 × 558; 100 KB



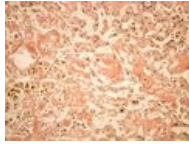
AML 20x.jpg
2,560 × 1,920;
2.86 MB



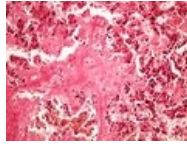
AML 4x.jpg
2,560 × 1,920;
3.68 MB



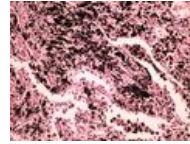
Amyloidosis kidn...
2,560 × 1,920;
2.98 MB



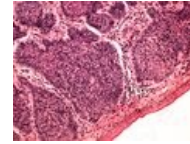
Amyloidosis liver ...
2,560 × 1,920; 2.9
MB



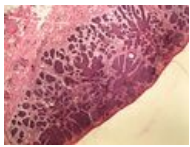
Amyloidosis liver ...
2,560 × 1,920;
2.85 MB



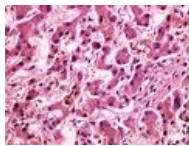
Anthracosis antr...
2,560 × 1,920;
2.81 MB



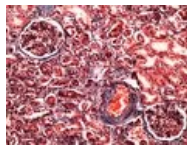
Basalioma 20x.jpg
2,560 × 1,920;
2.45 MB



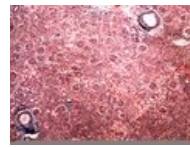
Basalioma 4x.jpg
2,560 × 1,920;
3.08 MB



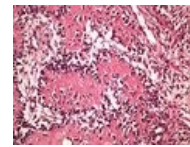
Bilirubin 40x.jpg
2,560 × 1,920;
2.75 MB



Blue trichrome (k...
2,560 × 1,920;
2.85 MB



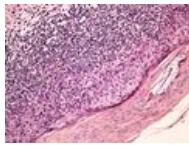
Blue trichrome (k...
2,560 × 1,920; 4
MB



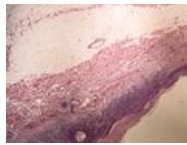
Bone fracture he...
2,560 × 1,920;
3.02 MB



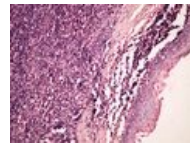
Bone fracture he...
2,560 × 1,920;
3.59 MB



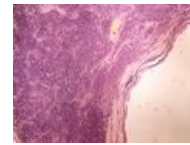
Bowen disease B...
2,560 × 1,920;
3.06 MB



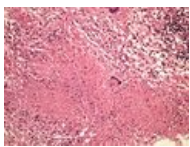
Bowen disease B...
2,560 × 1,920;
3.04 MB



Branchial cleft cy...
2,560 × 1,920;
2.89 MB



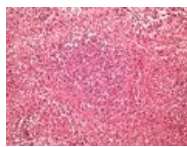
Branchial cleft cy...
2,560 × 1,920;
3.25 MB



Caseous necrosis...
2,560 × 1,920;
3.26 MB



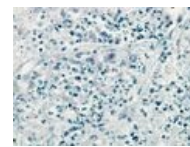
Caseous necrosis...
2,560 × 1,920;
3.71 MB



Caseous pneumo...
2,560 × 1,920;
3.37 MB



Caseous pneumo...
2,560 × 1,920;
3.86 MB



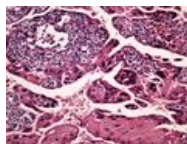
Caseous pneumo...
2,560 × 1,920;
2.35 MB



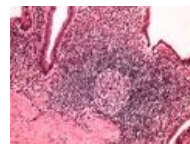
Cholesterol clefts...
2,560 × 1,920;
3.02 MB



Cholesterol clefts...
2,560 × 1,920;
3.35 MB



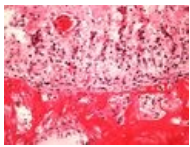
Choriocarcinoma ...
2,560 × 1,920;
2.61 MB



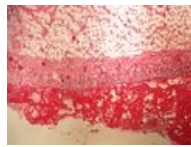
Chronic cholecys...
2,560 × 1,920;
2.84 MB



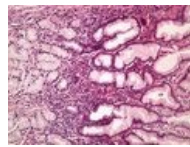
Chronic cholecys...
2,560 × 1,920;
3.06 MB



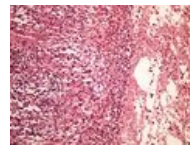
Chronic fibrinous ...
2,560 × 1,920;
2.76 MB



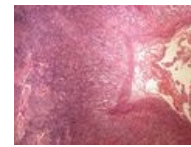
Chronic fibrinous ...
2,560 × 1,920;
2.95 MB



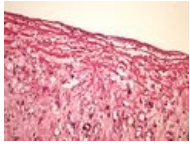
Chronic gastritis ...
2,560 × 1,920;
2.94 MB



Chronic lung abs...
2,560 × 1,920;
3.17 MB



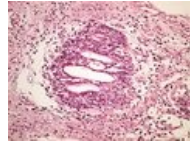
Chronic lung abs...
2,560 × 1,920;
3.81 MB



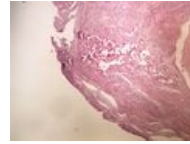
Chronic skin ulce...
2,560 × 1,920;
2.76 MB



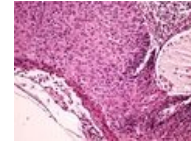
Chronic skin ulce...
2,560 × 1,920;
3.18 MB



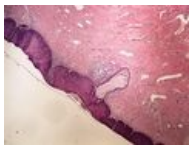
Chronic urocystiti...
2,560 × 1,920; 3.1
MB



Chronic urocystiti...
2,560 × 1,920;
3.08 MB



CIN 20x.jpg
2,560 × 1,920;
2.78 MB



CIN 4x.jpg
2,560 × 1,920;
3.22 MB



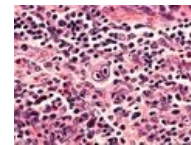
Classic Hodgkin l...
2,560 × 1,920;
3.23 MB



Classic Hodgkin l...
2,560 × 1,920;
3.62 MB



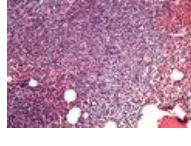
Classic Hodgkin l...
2,560 × 1,920; 4.5
MB



Classic Hodgkin l...
2,560 × 1,920;
2.48 MB



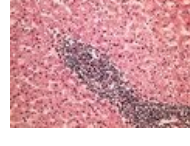
Clawed ring.svg
360 × 240; 6 KB



CLL bone marrow...
2,560 × 1,920; 3.3
MB



CLL bone marrow...
2,560 × 1,920;
3.18 MB



CLL liver infiltrac...
2,560 × 1,920;
3.58 MB



CLL liver infiltrac...
2,560 × 1,920;
3.86 MB



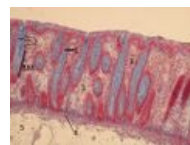
CLL SCL 20x.jpg
2,560 × 1,920;
3.53 MB



CLL SCL 4x.jpg
2,560 × 1,920;
4.12 MB



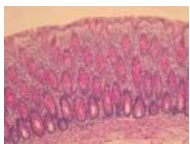
Colon 3lf.jpg
1,037 × 778; 238
KB



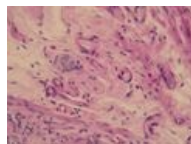
Colon AZAN 3lf.jpg
1,037 × 778; 303
KB



Colon PAS 3lf.jpg
1,037 × 778; 263
KB



Colon PAS2.jpg
1,037 × 778; 252
KB



Colon submucos...
1,037 × 778; 179
KB



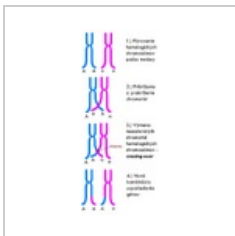
Coloring Van Gie...
2,560 × 1,920; 2.9
MB



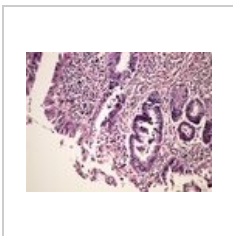
CRK.png
2,480 × 2,110; 132
KB



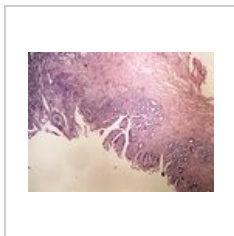
Crohns disease C...
2,560 × 1,920;
3.49 MB



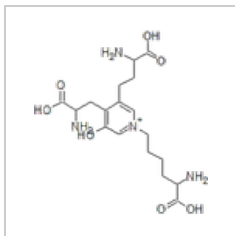
Crossing-over.png
250 × 599; 87 KB



DALM 20x.jpg
2,560 × 1,920; 2.9 MB



DALM 4x.jpg
2,560 × 1,920; 3.35 MB



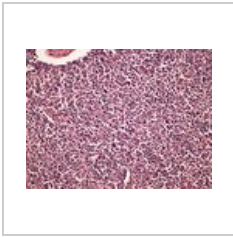
Deoxypyridinolinsulfonamide...
201 × 216; 2 KB



Diffuse carcinom...
2,560 × 1,920; 3.18 MB



Diffuse carcinom...
2,560 × 1,920; 3.76 MB



DLBCL 20x.jpg
2,560 × 1,920; 3.14 MB



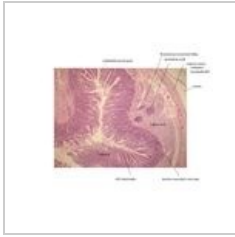
DLBCL 4x.jpg
2,560 × 1,920; 4.59 MB



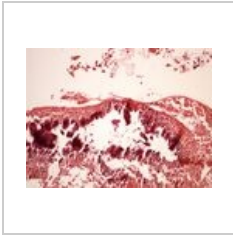
Dorsum linguae.jpg
3,046 × 2,454; 1.09 MB



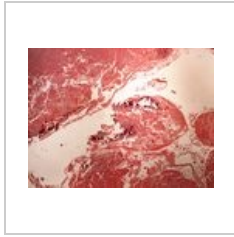
Ductus deferens...
750 × 604; 97 KB



Duodenum.jpeg
1,784 × 1,464; 395 KB



Dystrophic calcifi...
2,560 × 1,920; 2.49 MB



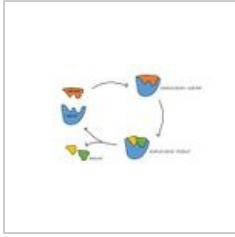
Dystrophic calcifi...
2,560 × 1,920; 3.03 MB



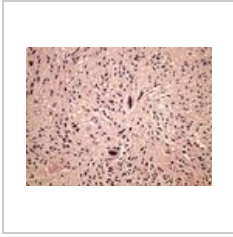
Elastic cartilage.j...
3,046 × 2,454; 1.02 MB



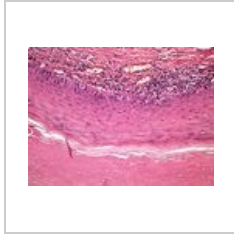
Enchondrální osif...
1,037 × 778; 260 KB



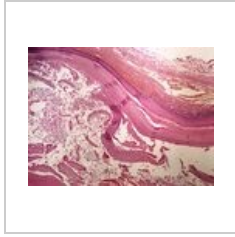
Enzyme-substrat...
1,280 × 720; 60 KB



Ependymoma 20...
2,560 × 1,920; 3.02 MB



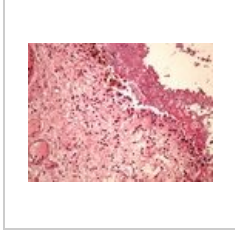
Epidermoid cyst ...
2,560 × 1,920; 2.93 MB



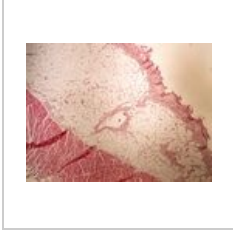
Epidermoid cyst ...
2,560 × 1,920; 3.26 MB



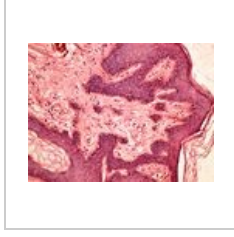
Fibrinoid dystrop...
2,560 × 1,920; 3.44 MB



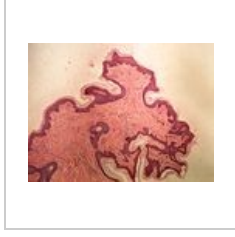
Fibrinous pericar...
2,560 × 1,920; 3.04 MB



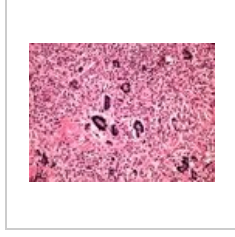
Fibrinous pericar...
2,560 × 1,920; 2.85 MB



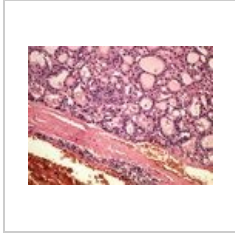
Fibroepithelial po...
2,560 × 1,920; 2.81 MB



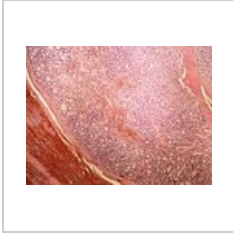
Fibroepithelial po...
2,560 × 1,920; 2.77 MB



Fibroxanthoma 2...
2,560 × 1,920; 3.04 MB



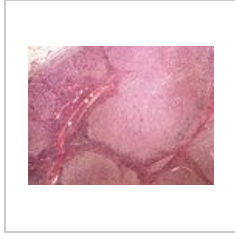
Follicular adenom...
2,560 × 1,920; 2.95 MB



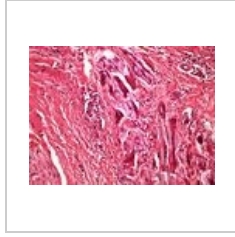
Follicular adenom...
2,560 × 1,920; 3.72 MB



Follicular lympho...
2,560 × 1,920; 3.43 MB



Follicular lympho...
2,560 × 1,920; 4.71 MB



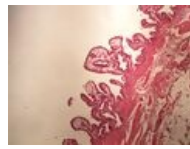
Foreign body gra...
2,560 × 1,920; 2.92 MB



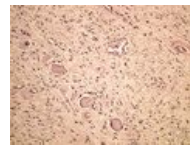
Foreign body gra...
2,560 × 1,920;
3.83 MB



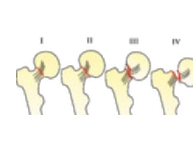
Gallbladder chole...
2,560 × 1,920;
2.78 MB



Gallbladder chole...
2,560 × 1,920;
2.69 MB



Ganglioneuroma ...
2,560 × 1,920;
3.11 MB

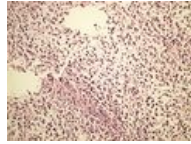


Garden classifica...
3,549 × 1,501; 394
KB

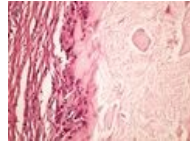
PALICKOVY PRST



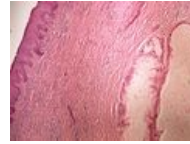
Gavel ring.svg
360 × 240; 6 KB



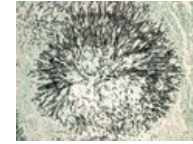
Glioblastoma 20x...
2,560 × 1,920;
2.98 MB



Gout dnave tofy ...
2,560 × 1,920;
2.69 MB



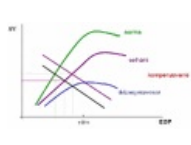
Gout dnave tofy ...
2,560 × 1,920;
3.47 MB



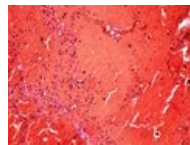
Grocott (mycosis...
2,560 × 1,920;
3.04 MB



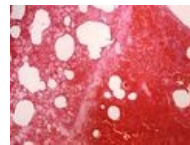
Grocott (mycosis...
2,560 × 1,920;
2.87 MB



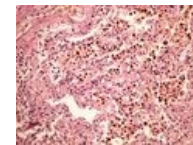
Heart Failure.gif
655 × 378; 15 KB



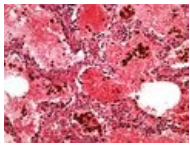
Hemorrhagic nec...
2,560 × 1,920; 2.4
MB



Hemorrhagic nec...
2,560 × 1,920;
3.04 MB



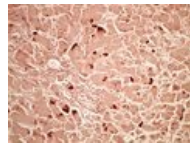
Hemosiderin 20x...
2,560 × 1,920;
3.27 MB



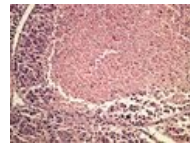
Hemosiderin lun...
2,560 × 1,920;
2.76 MB



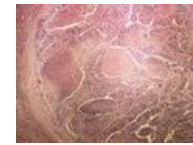
Hemosiderin lun...
2,560 × 1,920; 3.7
MB



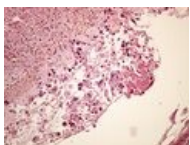
Hepatitis Orcein ...
2,560 × 1,920;
2.92 MB



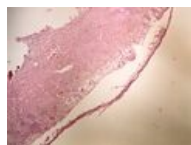
Hepatocellular ca...
2,560 × 1,920;
3.15 MB



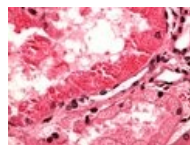
Hepatocellular ca...
2,560 × 1,920;
3.86 MB



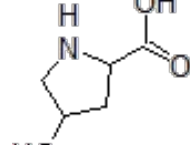
Herpes simplex h...
2,560 × 1,920;
2.83 MB



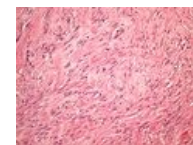
Herpes simplex h...
2,560 × 1,920;
2.85 MB



Hyaline droplets ...
2,560 × 1,920;
2.54 MB



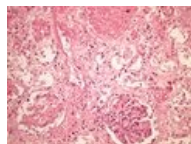
Hydroxyproline.p...
83 × 84; 799 bytes



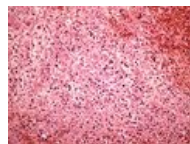
Hypertrophic sca...
2,560 × 1,920;
3.28 MB



Hypertrophic sca...
2,560 × 1,920; 3.4
MB



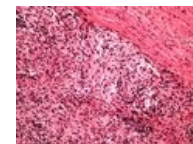
Infarction of kidn...
2,560 × 1,920;
3.13 MB



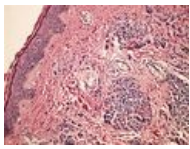
Infarction of sple...
2,560 × 1,920;
3.37 MB



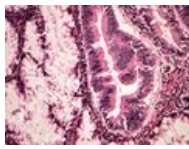
Infarction of sple...
2,560 × 1,920;
3.87 MB



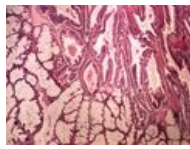
Inflammatory ps...
2,560 × 1,920;
2.97 MB



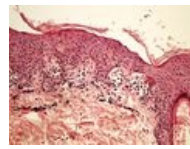
Intradermal mole...
2,560 × 1,920;
3.14 MB



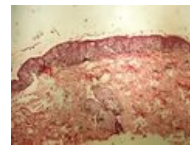
Invasive cancer a...
2,560 × 1,920;
2.77 MB



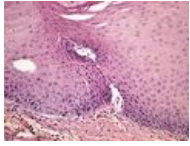
Invasive cancer a...
2,560 × 1,920;
3.35 MB



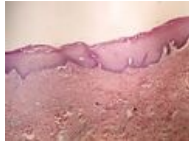
Junction mole jun...
2,560 × 1,920;
2.71 MB



Junction mole jun...
2,560 × 1,920;
3.04 MB



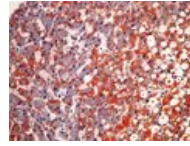
Leukoplakia 20x.j...
2,560 × 1,920;
2.75 MB



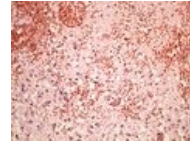
Leukoplakia 4x.jpg
2,560 × 1,920;
2.94 MB



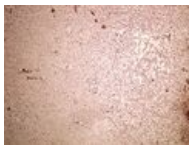
Lipid staining (liv...
2,560 × 1,920;
3.49 MB



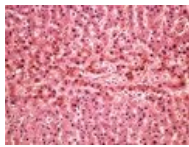
Lipid staining (liv...
2,560 × 1,920;
2.97 MB



Liquifactive necr...
2,560 × 1,920;
3.21 MB



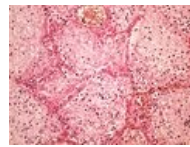
Liquifactive necr...
2,560 × 1,920;
3.72 MB



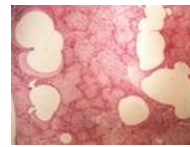
Liver atrophy bro...
2,560 × 1,920;
3.21 MB



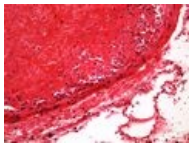
Liver atrophy bro...
2,560 × 1,920;
3.55 MB



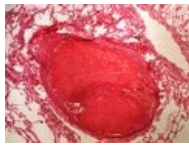
Lobar pneumonia...
2,560 × 1,920;
3.34 MB



Lobar pneumonia...
2,560 × 1,920;
3.24 MB



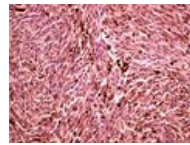
Lung trombotic e...
2,560 × 1,920;
2.23 MB



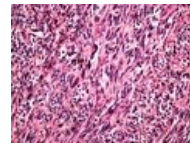
Lung trombotic e...
2,560 × 1,920; 3
MB



Malnutrition spiral ...
480 × 360; 20 KB



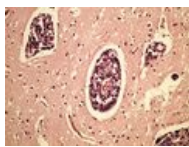
Melanin 20x.jpg
2,560 × 1,920; 3.2
MB



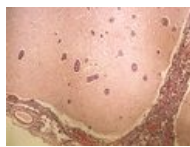
Melanoma 20x.jpg
2,560 × 1,920;
3.05 MB



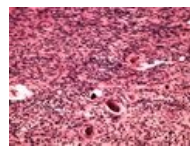
Melanoma 4x.jpg
2,560 × 1,920; 4.3
MB



Meningeal carcin...
2,560 × 1,920;
2.82 MB



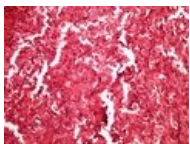
Meningeal carcin...
2,560 × 1,920;
3.12 MB



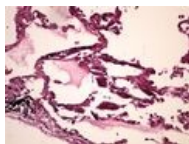
Meningioma men...
2,560 × 1,920;
2.91 MB



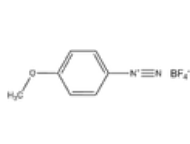
Meningioma men...
2,560 × 1,920;
3.78 MB



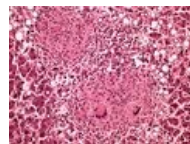
Mesothelioma 20...
2,560 × 1,920;
2.76 MB



Metastatic calcifi...
2,560 × 1,920;
2.28 MB



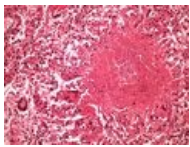
Metoxybenzendi...
923 × 260; 5 KB



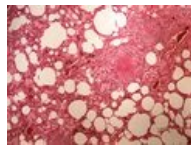
Milliary TB liver ...
2,560 × 1,920;
3.08 MB



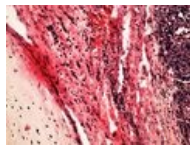
Milliary TB liver ...
2,560 × 1,920;
4.05 MB



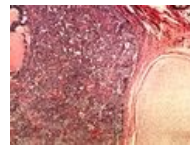
Miliary TB miliar...
2,560 × 1,920;
3.06 MB



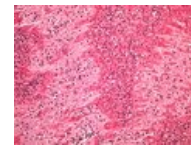
Miliary TB miliar...
2,560 × 1,920;
3.11 MB



Mixed germinal t...
2,560 × 1,920;
2.62 MB



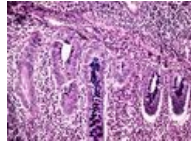
Mixed germinal t...
2,560 × 1,920;
3.46 MB



Mixed trombus s...
2,560 × 1,920;
3.32 MB



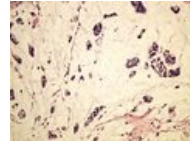
Mixed trombus s...
2,560 × 1,920;
3.65 MB



Mowry (appendix...
2,560 × 1,920;
3.32 MB



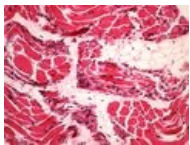
Mowry (appendix...
2,560 × 1,920;
3.89 MB



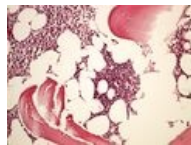
Mucinous carcino...
2,560 × 1,920;
2.48 MB



Mucinous carcino...
2,560 × 1,920;
3.26 MB



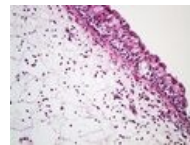
Muscular atrophy...
2,560 × 1,920;
2.62 MB



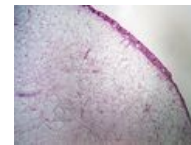
Myeloma mnohot...
2,560 × 1,920;
2.46 MB



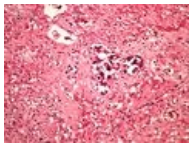
Myeloma mnohot...
2,560 × 1,920;
2.93 MB



Nasal polyp nosn...
2,560 × 1,920;
2.38 MB



Nasal polyp nosn...
2,560 × 1,920;
2.71 MB



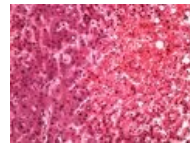
Neoplastic embol...
2,560 × 1,920;
2.95 MB



Neoplastic embol...
2,560 × 1,920;
3.57 MB



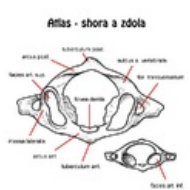
Neuroendocrine t...
2,560 × 1,920;
3.73 MB



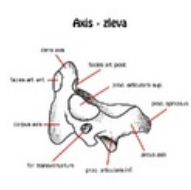
Nutmeg liver chr...
2,560 × 1,920;
2.72 MB



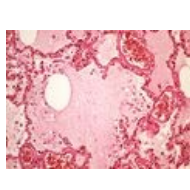
Nutmeg liver chr...
2,560 × 1,920;
3.38 MB



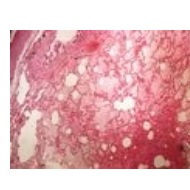
Obratel atlas.png
600 × 600; 64 KB



Obratel axis zlev...
600 × 600; 43 KB



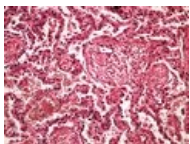
Oedema lung ed...
2,560 × 1,920;
3.08 MB



Oedema lung ed...
2,560 × 1,920;
3.18 MB



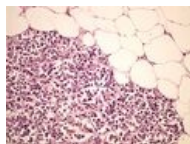
Operační protoko...
2,966 × 4,480;
2.99 MB



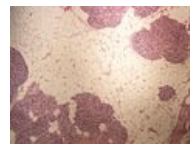
Organized lobar ...
2,560 × 1,920;
3.07 MB



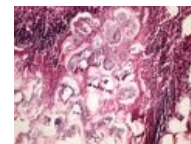
Organized lobar ...
2,560 × 1,920;
3.93 MB



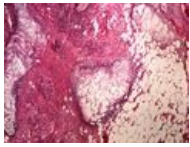
Pancreas atrophy...
2,560 × 1,920;
2.84 MB



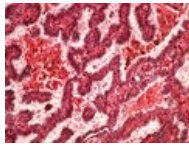
Pancreas atrophy...
2,560 × 1,920;
3.06 MB



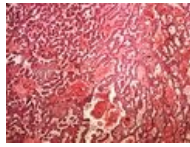
Pancreatitis 20x.j...
2,560 × 1,920;
2.76 MB



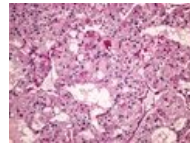
Pancreatitis 4x.jpg
2,560 × 1,920;
3.21 MB



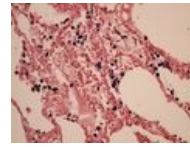
Papillary carcino...
2,560 × 1,920;
2.87 MB



Papillary carcino...
2,560 × 1,920;
3.65 MB



PAS (clear cell re...
2,560 × 1,920;
3.16 MB



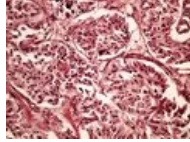
Pearls reaction (l...
2,560 × 1,920;
2.87 MB



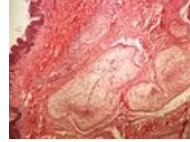
Pearls reaction (l...
2,560 × 1,920;
2.77 MB



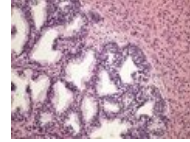
Perisplenitis carti...
2,560 × 1,920;
3.58 MB



Pheochromocyto...
2,560 × 1,920;
2.82 MB



Plexiform neurofi...
2,560 × 1,920;
3.54 MB



Prostate hyperpl...
2,560 × 1,920;
3.04 MB

(previous page) (next page)