

# Migration and Transmigration of Teeth

## Migration of Teeth

- Is the tooth movement occurring AFTER tooth eruption
- Causes:
  1. Periodontal disease
  2. Occlusal trauma
- Factors that influence their movement:
  1. Masticatory forces
  2. Tongue forces
  3. cheeks
  4. Lips
- Manifestation:
  1. Rotation
  2. Diastema
  3. Extrusion, intrusion
  4. Proclination

## Transmigration

- Tooth movement BEFORE tooth eruption
- The tooth moves inside the mandible (or maxilla), like a "Tunnel Boring Machine"
- As a result the tooth might erupt in a wrong place (transposition or ectopy) or even remain under the bone (impacted)
- More commonly seen in mandibular permanent canines

## Links

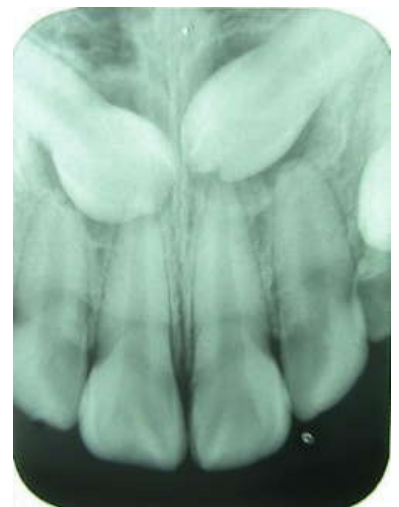
### Related Articles

- Classification of Orthodontic Anomalies

### Bibliography

KLEPACEK, Ivo. *Anatomy of teeth* [lecture for subject Clinical orofacial anatomy, specialization Clinical orofacial anatomy, LF1 Charles university]. Prague. April.

### References



impacted upper canines