

# Allen's test

This article has been translated from WikiSkripta; the **formatting** needs to be checked.

Allen's test is used to **functionally examine the arteries** of the upper limbs distal to the wrist.

## Examined blood vessels

- a. radialis;
- a. ulnaris;
- **superficial palmar arch;**
- **deep palmar arch.**

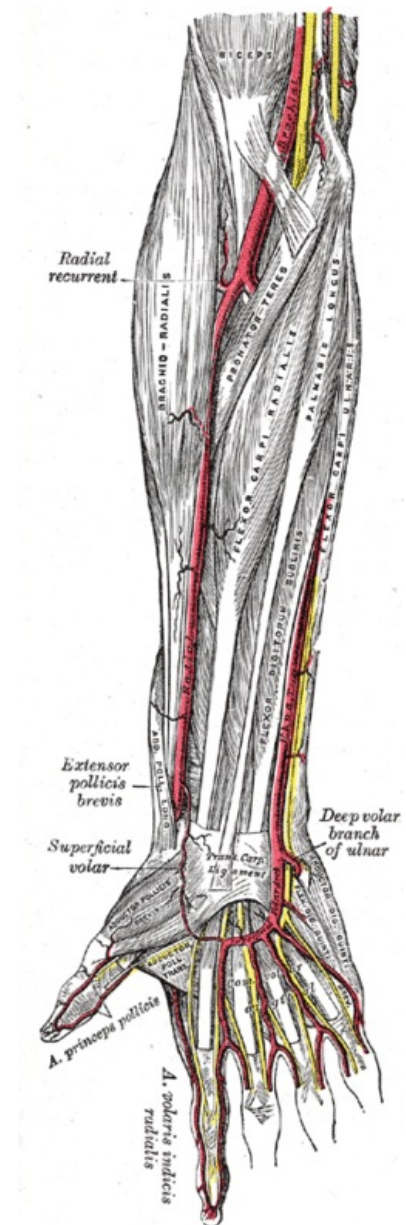
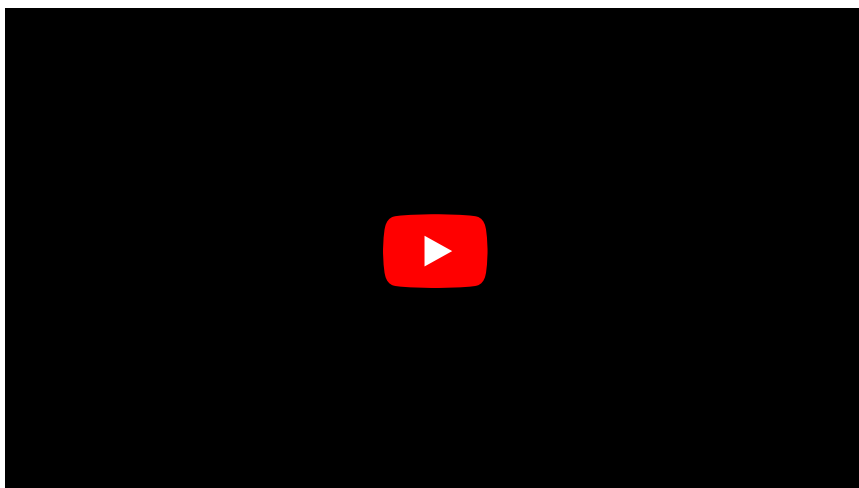
## Execution

1. We will examine and mark the sites for palpation of the radial and ulnar artery.
2. The patient then rhythmically clenches his hand into a fist several times and finally leaves it tightly clenched.
3. In the places we have marked, we compress both blood vessels to prevent blood flow.
4. Let the patient's fist loosen, fingers and palm should be pale. (If they're not, we probably haven't pinched the arteries enough.)
5. During constant compression, the patient hangs his hand and we then release the pressure on **one** of the arteries. The patency of the artery and the corresponding arc is manifested by reddening of the hand within a few seconds.

<ref name="Chrobák">CHROBÁK, Ladislav. *Propaedeutics of Internal Medicine-New, completely revised and supplemented edition*. - edition. Grada Publishing a.s., 2007. pp. 243. ISBN 9788024713090.

**Cite error: The opening <ref> tag is malformed or has a bad name**

1. Repeat the test for the second artery of the same hand and then for the other hand.



Upper body arteries

## References

### Related Articles

- Examination of arteries
- Ratschov test

## References

- CHROBÁK, Ladislav, et al. *Propedeutika vnitřního lékařství*. 2. edition. Prague : GRADA Publishing, 2007. pp. 243. ISBN 978-80-247-1309-0.

## Reference